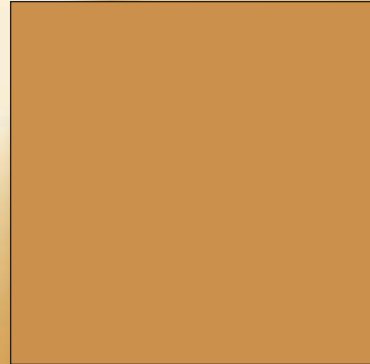
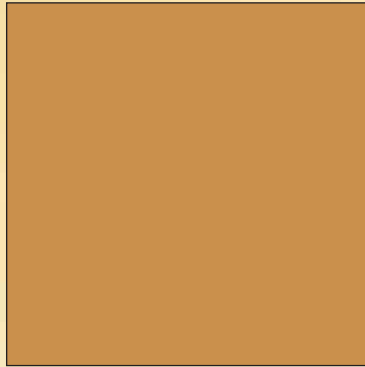




# WALL SCONES





CCS1



CCS3



CCS4



CCS5



CCS6



CCS7



**CCS8**



**CCS9**



**CCS10**



**CCS12**



**CCS13**



**CCS14**



**CCS15**



**CCS16**



**CCS17**



**CCS18**



**CCS19**



**CCS20**





**CCS21**



**CCS22**



**CCS23**



**CCS24**



**CCS25**



**CCS26**



**CCS27**



**CCS28**

# FINISHES

## SOLID WOOD AND TRIM FINISHES



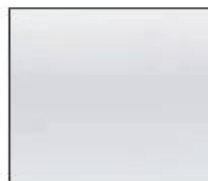
001-Natural Oak Top Coat



002-Medium Oak Top Coat



003-Cherry Top Coat



004-White



005-Mahogany Top Coat



006-Maple Top Coat



007-Espresso Top Coat



008-Fruitwood



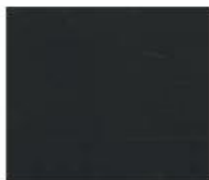
009-No Finish



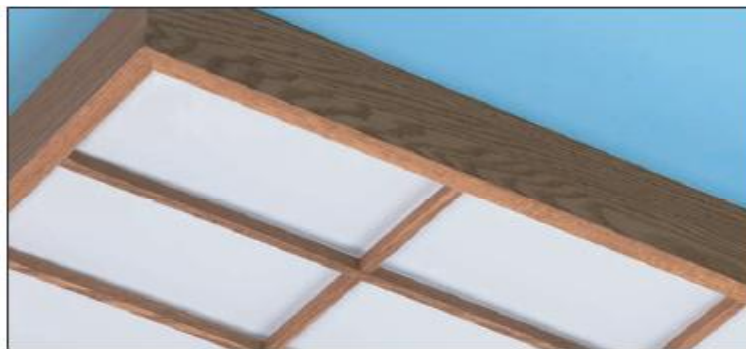
010-Brushed Nickel



011-Brushed Brass



012-Black



## FINISHES ON URETHANE FOAM



100-Parchment



101-Rust



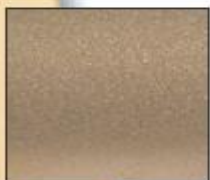
102-Travertine



103-Verde



104-Solid Bronze



106-Solid Gold



107-Solid Silver



109-Provincial



110-Espresso



111-Solid Pewter



112-Sienne Verde



117-Flat Black



118-White



119-Walnut



120-Mahogany



121-Cherry



122-Antique Silver



123-Antique Bronze



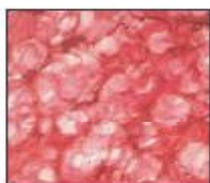
124-Antique Pewter



125-Antique Gold



## ACRYLIC SURFACE FINISHES



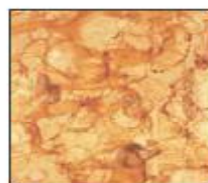
200-Blood Stone



201-Hammered Copper



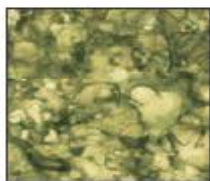
202-Copper Silver Swirl



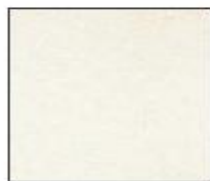
203-Tiger Iron



204-Blue Lapis



205-Green Malachite



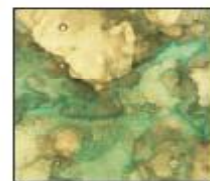
206-Scavo



207-Mahogany



208-Ocean Blue



209-Jadite



210-Desert Rose



211-Sedona



212-Applied Linen



213-Linen



214-Alabaster



215-Marble



216-Rice Paper



217-White Matte Acrylic



218-Opaque Oxidized Copper



SBF-Sanded



Blank-Smooth

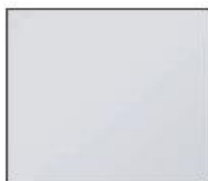
## CAST ACRYLIC FINISHES



300-Beige Alabaster



301-White Alabaster



302-White Acrylic



303-Horn Alabaster



ETW-Cut Etched White Acrylic

## MISCELLANEOUS FINISHES AND EDGE TRIM



WM-White Marble



IV-Ivory Marble



AL-Alabaster



SV-Silver



C-Chrome