

MODEL #
HREA

TECHNICAL SPECIFICATION



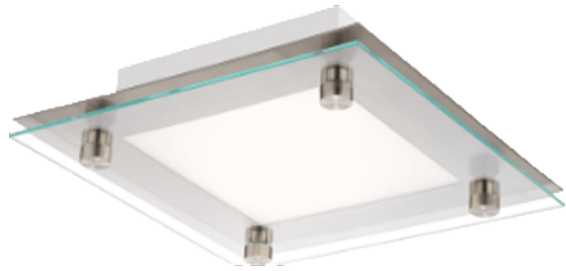
MODEL #:	WATTAGE:	VOLTAGE:	KELVIN:	SIZE:
TECHNOLOGY:	ACCESSORIES:			
PROJECT:	NOTES:			
TYPE:	AREA:			

FEATURES

PRODUCT IMAGE

APPLICATION
Ceiling
Indoor

LOCATION
Damp



LIGHT PROPERTIES

Available Kelvin Options:

2700K WARM WHITE	3000K SOFT WHITE	3500K NEUTRAL	4000K COOL WHITE	5000K DAYLIGHT
---------------------	---------------------	------------------	---------------------	-------------------

LED CHIPS USED
LG/NICHIA/SAMSUNG

TESTED
LM80 AND
LM82

CRI
80+

LIFE HOURS
50,000

WATTAGE	SOURCE LUMENS @40K	DELIVERED LUMENS
9	1259	1007
12	1520	1216
15	1750	1400
20	2494	1995
24	2793	2234
31	4000	3200

VOLTAGE
Standard: ND - 120V NON DIMMABLE
DV - 120V/277V NON DIMMABLE
TD - 120V TRIAC/ELV DIMMABLE
DVD - 120/277V 0-10V DIMMABLE



ASL LIGHTING

725 East state St. Trenton, NJ 08609 | info@aslightng.com | www.aslighting.com

TOLL FREE: 800-1101-1101 | LOCAL: 718-369-1100 | Shipping & Receiving: 322 Monmouth Street, Trenton, NJ, 08609

Specifications and dimensions are subject to change without notice / Consult your ASL lighten representative.

© Copyright © 2025 ASL Lighting Inc. All rights reserved.



Approval upon request

STANDARD OPTIONS

STANDARD BASE CONSTRUCTION

CR Steel Construction






STANDARD LENS

Glass

STANDARD FINISH

Satin Nickel

MODEL #HREA ORDER FORM

WATTAGE *	VOLTAGE	KELVIN	SIZE
W9 - 9	Standard Voltage: ND - 120V NON DIMMABLE DV - 120V/277V NON DIMMABLE TD - 120V TRIAC/ELV DIMMABLE DVD - 120/277V 0-10V DIMMABLE	 27K	L13 - L13 W13 H3.8
W12 - 12		 30K	
W15 - 15		 35K	
W20 - 20		 40K	
W24 - 24		 50K	
W31 - 31			

* Up to 200W available on fixtures over 24".

SPECIAL OPTIONS AVAILABLE (ONLY WHEN REQUIRED)

TECHNOLOGY	ACCESSORIES
EMG - Emergency EMGR - Emergency Remote OS - Occupancy Sensor OSCD - Occupancy Sensor Step Dimming PC - Photo Control	BB - Back Box (Extended Base) BBX - Back Box (Extended Base) (Conduit Holes Optional) CCS - Cable Cord Suspension System FI - Finial PK1 - Canopy/Pendant Kit/1 ROD PK2 - Canopy/Pendant Kit/2 RODS PK3 - Canopy/Pendant Kit/3 RODS

CUSTOM FINISH OPTIONS

Not seeing what you're looking for? Contact us to discuss more options.



ASL LIGHTING

725 East state St. Trenton, NJ 08609 | info@aslightng.com | www.aslighting.com

TOLL FREE: 800-1101-1101 | LOCAL: 718-369-1100 | Shipping & Receiving: 322 Monmouth Street, Trenton, NJ, 08609

Specifications and dimensions are subject to change without notice / Consult your ASL lighten representative.

© Copyright © 2025 ASL Lighting Inc. All rights reserved.



Approval upon request